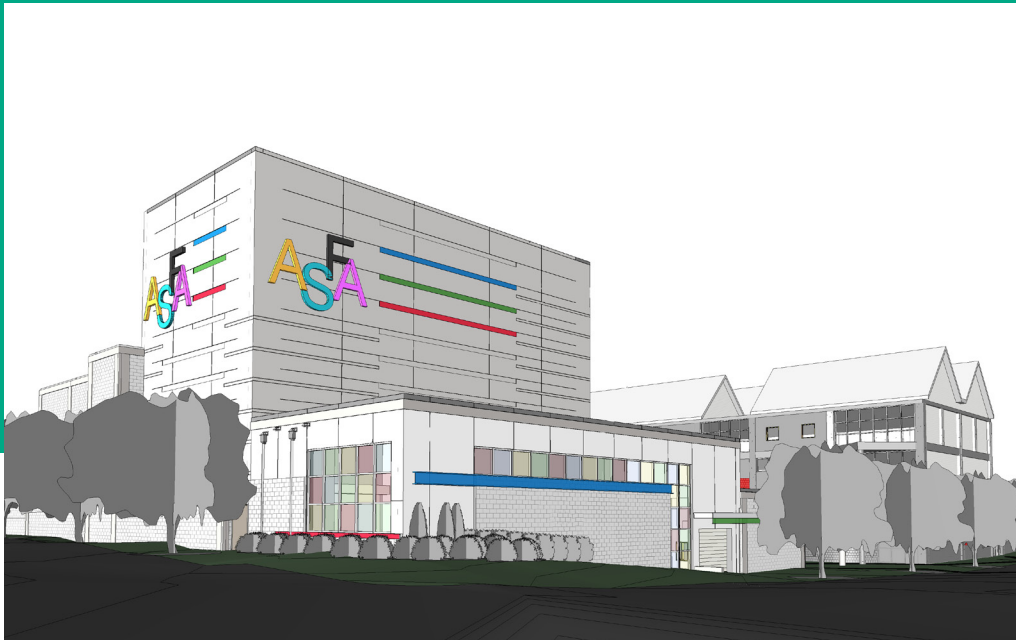


Alabama School of Fine Arts Theatre



The exterior rendering illustrates how the stage tower at Alabama School of Fine Arts' new theatre will be used to give the campus heightened visibility. A public entrance will facilitate access separate from the school.

By Philip Morris

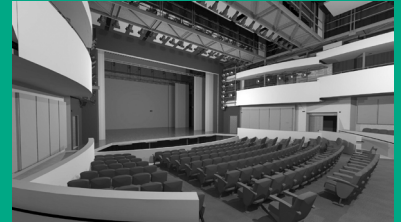


Construction is underway on a new 19,200-square-foot performance hall for Alabama School of Fine Arts (ASFA) at its downtown Birmingham location. As well as giving the middle-through-high school a much-needed teaching and 500-seat venue, the building's commanding stage tower will give it increased visibility at a prominent corner near Birmingham Museum of Fine Arts and the BJCC.

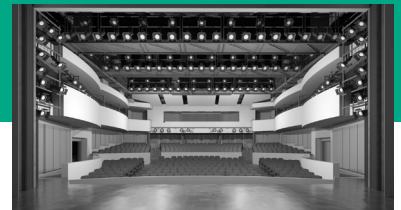
"The theatre was originally planned to be on a parking lot across the street," says Craig Krawczyk, project architect for LIVE Design Group of Birmingham. "But the client decided it would be better placed on the same block as the existing building. It was a big challenge to fit it on that corner, but once we determined that their recital hall could become the lobby it worked out."

Exterior materials were selected to extend the color and texture of the existing building, with split-face concrete block on the theatre and textured concrete panels accented with color bars for the tall stage house. "We introduced a clerestory window along the scene shop that faces the street so students working on sets will be visible to people passing by," Krawczyk adds. The theatre is scheduled for completion next winter.

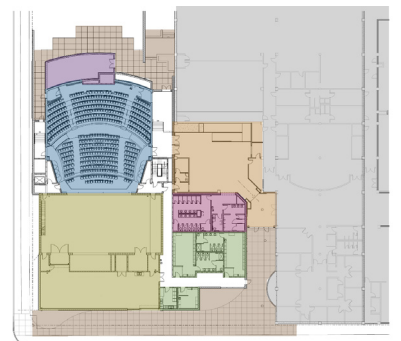
Graphics Courtesy of LIVE Design Group



The 500-seat theatre space will be used for ASEA's ballet, drama, dance and music programs.



A full working theatre will give students a full working professional stage and equipment in an intimate setting.



The school's existing recital hall became a part of the new theatre lobby (lower left). The main school building is to the right.